

# HARDING TRAFFIC



## HTL SmartSign

☎ 0800 427 346 ✉ [sales@hardingtraffic.co.nz](mailto:sales@hardingtraffic.co.nz)

# About Us

At Harding Traffic, we are more than just a company; we are pioneers in traffic control solutions with a rich history dating back to 1966 when Harding Signals was incorporated. This marked our venture into electronic traffic signals.

In 1997, our area of operations moved away from Traffic Signals and into Electronic Signage and Traffic Management Systems. To reflect this, we changed our name to Harding Electronic Signals Ltd. Harding Traffic's integration into the Traffitech Group in 2007 marked a new era of growth, joining a group of companies boasting a robust financial standing with \$45 million in revenue, assets exceeding \$20 million, and a dedicated team of 180 staff and 6 locations across New Zealand.



Our journey has been marked by a steadfast dedication to innovation and quality, leading the charge in traffic control technology. With 1000's of the country's traffic signs installed by Harding Traffic over 27 years, our impact is undeniable. Yet our ambition extends beyond electronic traffic signs; we've become a comprehensive provider of traffic management/warning systems, car park solutions, integrated traffic management solutions, data capture and analytics along with so much more. We are committed to enhancing urban infrastructure with our cutting-edge solutions.

Today, Harding Traffic stands as a testament to over 50 years of expertise in the traffic industry. Our capabilities extend across the design, manufacture, and installation of high quality, specialised traffic systems. This includes everything from Motorway signs and School Zone signs to Rural Interchange Advance Warning Signs, Illuminated Road Stud technologies, car park systems, electronic warning systems and off-street signage. We take pride in serving a diverse clientele that includes NZTA, local Councils and authorities, commercial entities and contractors.

## Quality Guaranteed

Harding Traffic holds AS/NZS 4801 Health and Safety Management certification, ISO 9001 manufacturing quality certification and ISO 14001 Environmental Management System certification. These certifications represent Harding's commitment to providing a consistently high level of service, delivery quality products based on sound management and process controls.

# Powerful, Intelligent Sign Management Anywhere, Anytime

## Take Control of Your Electronic Road Signs with Confidence

Managing roadside signage shouldn't be complicated. With HTL SmartSign, transportation authorities, councils, and administrators are empowered to seamlessly control and monitor electronic road signs from one centralised, cloud-based platform. Designed with both simplicity and sophistication in mind, SmartSign enables you to automate schedules, track sign performance, and make informed decisions that enhance road safety and operational efficiency.

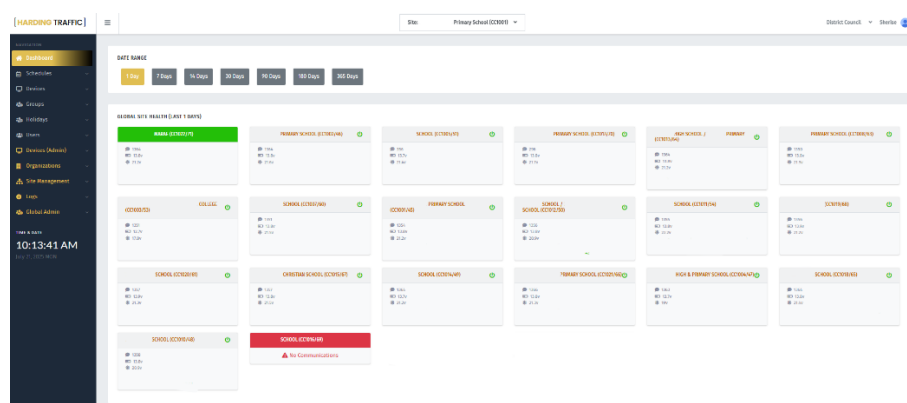
Whether you're managing a single school zone or an entire network of safety signs, SmartSign delivers the reliability, visibility, and control you need - right at your fingertips.

Each SmartSign system comes with a **5-year licence and data connection included**, meaning there are no ongoing subscription or connectivity fees to worry about for the first five years. At the end of this period, a 5-year extension can be purchased to continue uninterrupted access to SmartSign.

## Key Features That Set SmartSign Apart

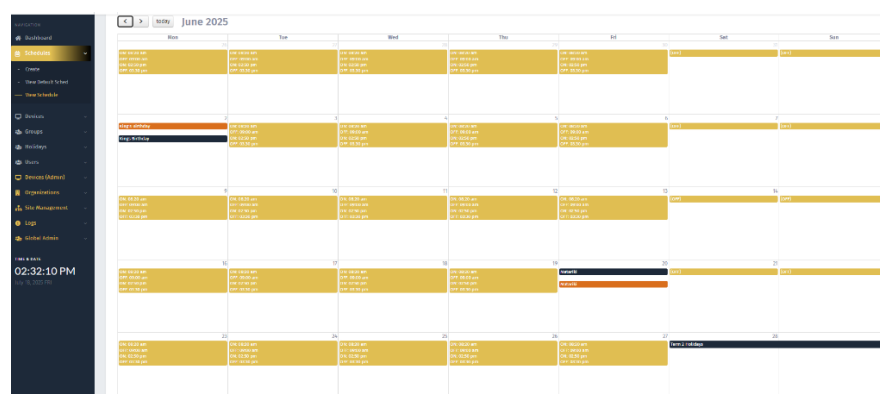
### Centralised Control for Multiple Sites

SmartSign brings all your connected devices into one unified interface. From this dashboard, you can manage dozens—or even hundreds—of signs across multiple locations, ensuring consistent messaging and efficient scheduling across your region. No more manual adjustments or guesswork—just clear, centralised visibility and control.



### Automated Scheduling Made Simple

Take the hassle out of daily operations with fully customisable scheduling. Create recurring on/off times for each day of the week, accommodate public holidays and teacher-only days with tailored holiday schedules, or override settings temporarily for one-off events. The system's intuitive design allows users to set up, preview, and adjust schedules with minimal effort, ensuring signs are operating only when needed.

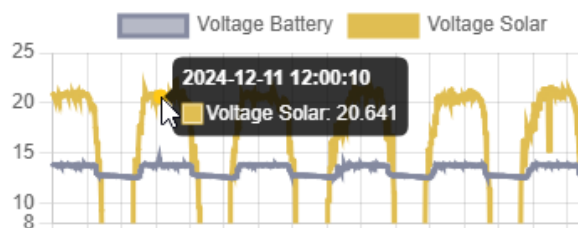


## Real-Time Monitoring and Insights

Stay ahead of the game with powerful monitoring tools. The dashboard provides live updates on battery levels, solar charging, communication health, and sign activity. Detailed voltage reports, operational timelines, and triggered alarms - such as when a sign's door is opened - give you full oversight of your network's performance. Signs check in every 15 minutes, so you always have current data at your fingertips.

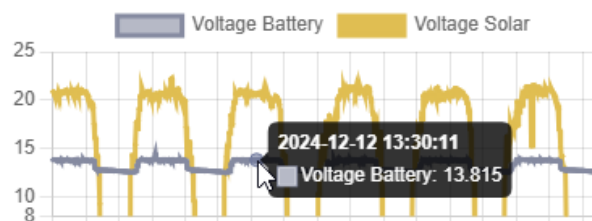
### BATTERY

#### SOLAR



### BATTERY

#### SOLAR

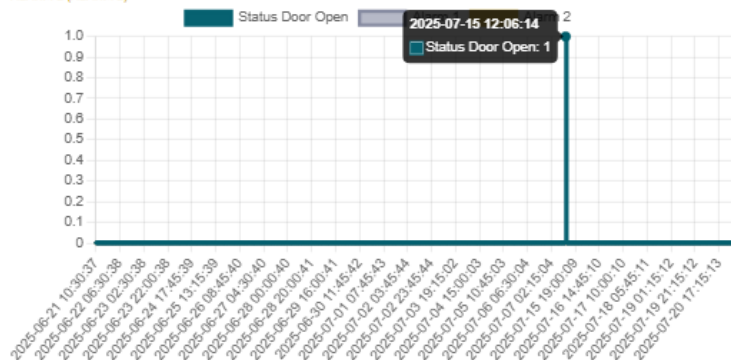


### ALARM REPORTING

#### DOOR OPEN

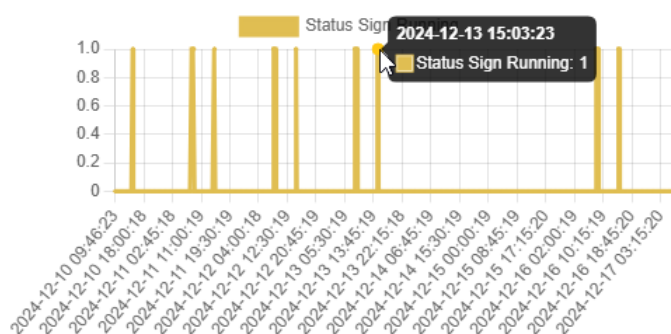
##### ALARM 1 (ALARM 1)

##### ALARM 2 (ALARM 2)



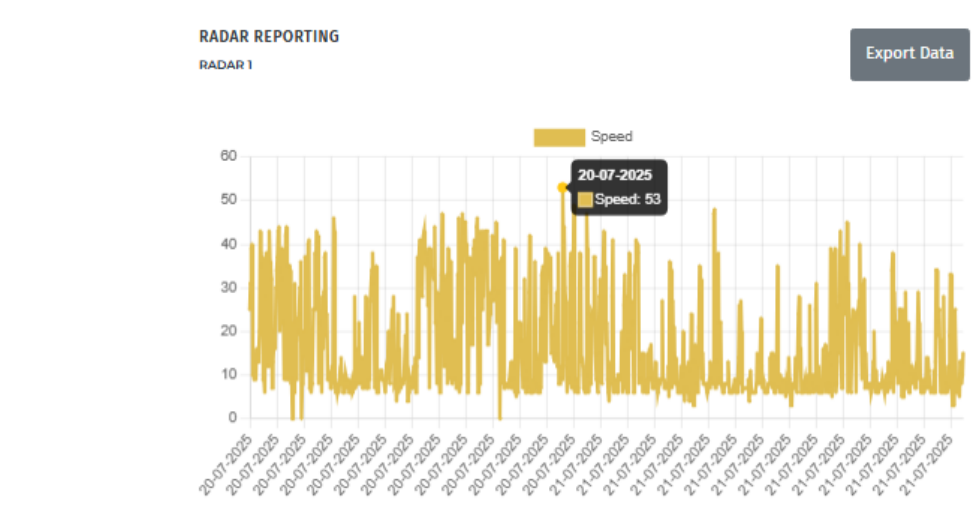
### STATUS REPORTING

#### SIGN RUNNING



## Radar Reporting and Data Export

For signs equipped with radar, SmartSign allows you to capture and export valuable speed and volume data. Simply select your date range and export to CSV to analyse trends, review driver behaviour, or support planning and enforcement efforts.



## Secure and Scalable User Access

Control who can see and change what. Create unique logins for different users, and assign permissions based on role - whether view - only access for monitoring or full administrative rights. All data and access points are protected with modern authentication and encryption protocols to keep your network secure.

User Summary			
USERS AND PERMISSIONS			
<input checked="" type="checkbox"/> USER ID: 13	NAME	EMAIL	<a href="#">DISABLE ACCOUNT</a>
Site: GR1000 - Site 2 (H1, K102) Site: GR1000 - Site 1 (H1, K101)			
	Permissions Level: 1 (Basic)		
<input checked="" type="checkbox"/> USER ID: 4	NAME	EMAIL	<a href="#">DISABLE ACCOUNT</a>
Site: A1077 - School			
	Permissions Level: 2 (Basic)		
<input checked="" type="checkbox"/> USER ID: 8	NAME	EMAIL	<a href="#">DISABLE ACCOUNT</a>
Site: A1077 - School			
	Permissions Level: 2 (Basic)		
<input checked="" type="checkbox"/> USER ID: 45	NAME	EMAIL	<a href="#">DISABLE ACCOUNT</a>
Site: A1074 - Local			
	Permissions Level: 2 (Basic)		

